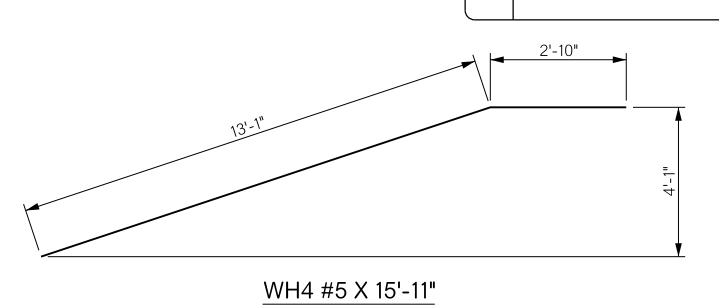
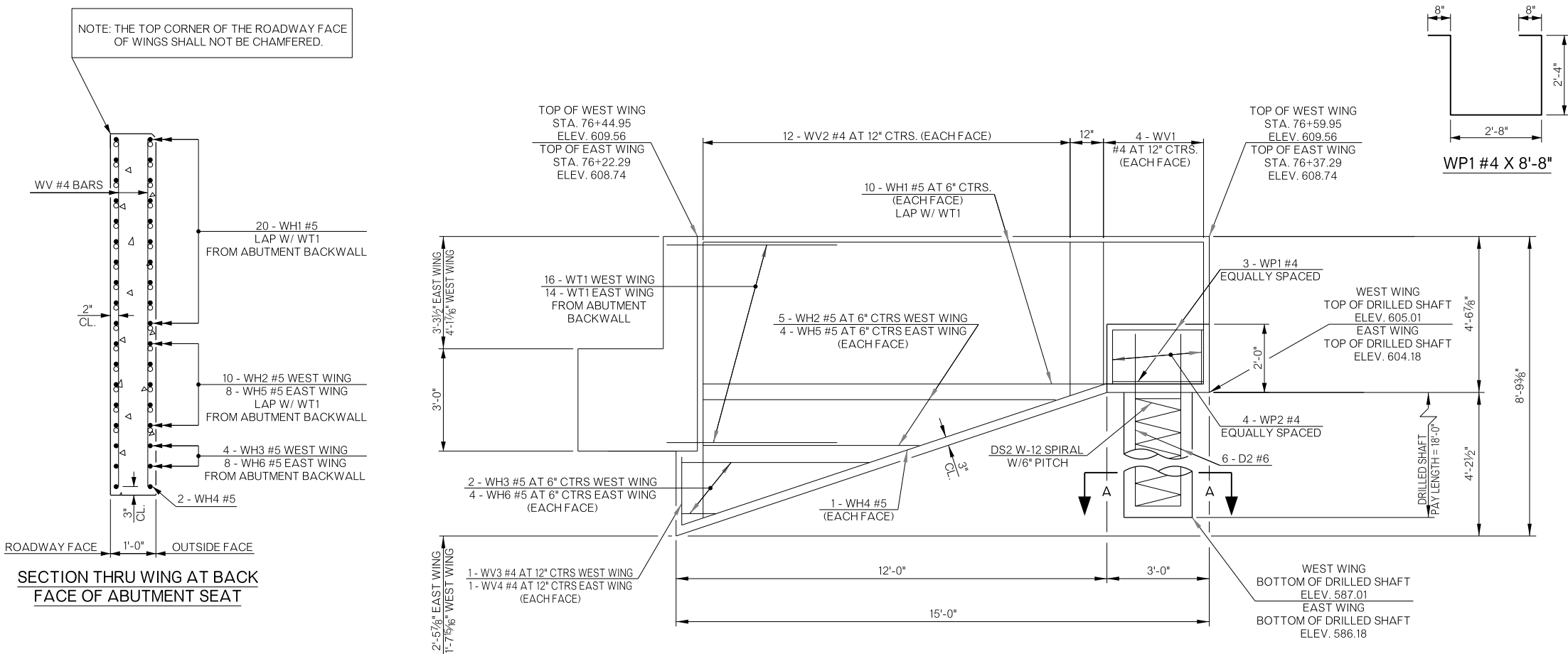
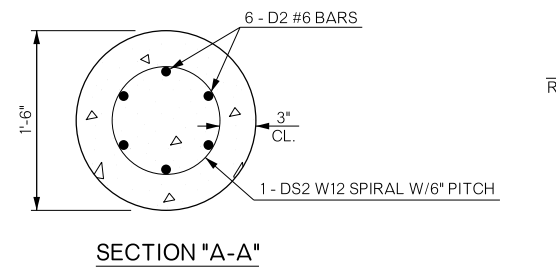
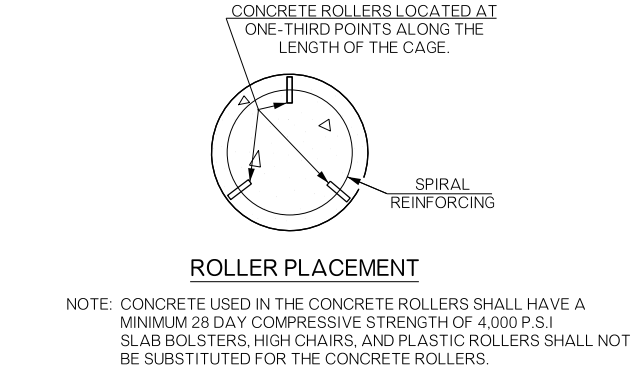
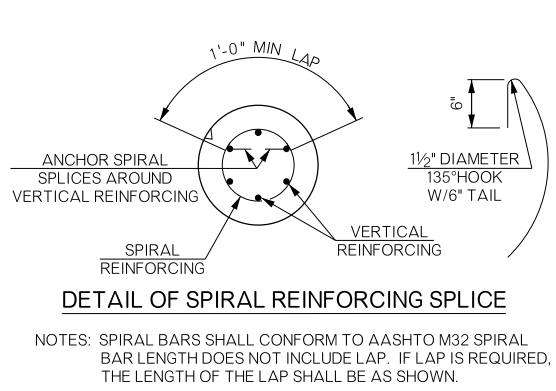
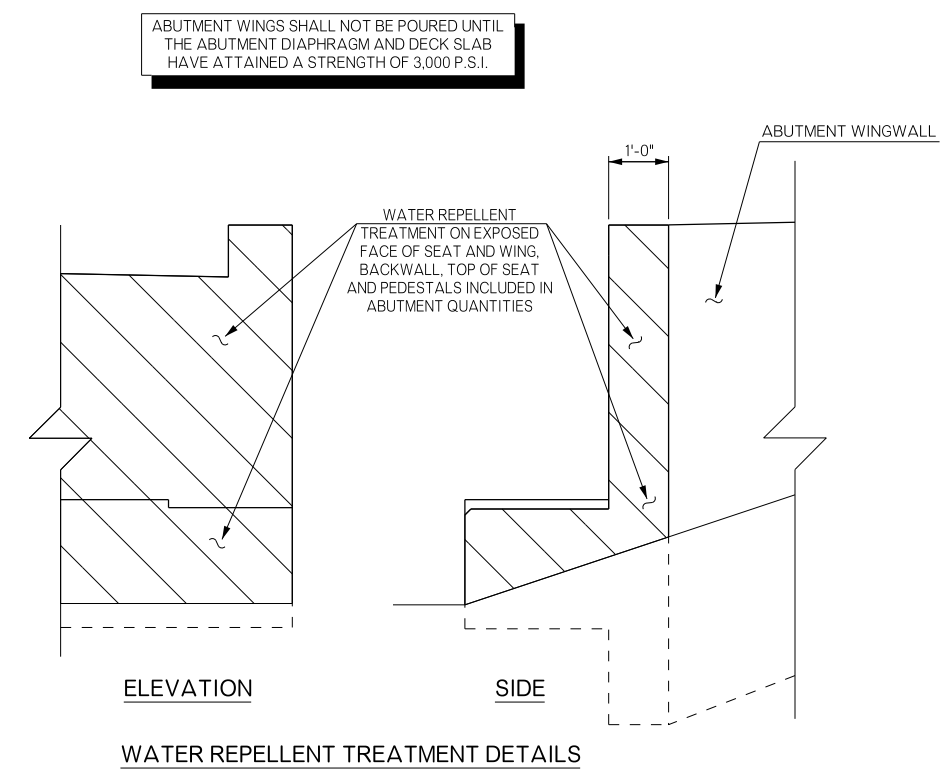


REVISIONS		
REV. NO.	DESCRIPTION	DATE



BAR LIST - WEST WING					
MARK	NO.	SIZE	FORM	LENGTH	VARIANCE
EPOXY COATED					
WH1	20	#5	STR.	14'-8"	---
① WH2	10	#5	STR.	7'-9" AVG.	5'-2" TO 10'-4"
② WH3	4	#5	STR.	2'-3" AVG.	1'-6" TO 3'-0"
WH4	2	#5	BNT.	15'-11"	---
WP1	3	#4	BNT.	8'-8"	---
WP2	4	#4	STR.	1'-7"	---
WV1	8	#4	STR.	4'-2"	---
③ WV2	24	#4	STR.	6'-3½" AVG.	4'-6" TO 8'-1"
WV3	2	#4	STR.	1'-2"	---
⑤ ONE 18" DRILLED SHAFT					
EPOXY COATED					
D2	6	#6	STR.	19'-5"	---
NON-EPOXY COATED					
DS2	1	W12	SPIRAL	63'-2"	---



BAR LIST - EAST WING					
MARK	NO.	SIZE	FORM	LENGTH	VARIANCE
EPOXY COATED					
WH1	20	#5	STR.	14'-8"	---
WH4	2	#5	STR.	15'-11"	---
④ WH5	8	#5	STR.	8'-4" AVG.	6'-4" TO 10'-4"
④ WH6	8	#5	STR.	3'-3" AVG.	1'-0" TO 5'-6"
WP1	3	#4	BNT.	8'-8"	---
WP2	4	#4	STR.	1'-7"	---
WV1	8	#4	STR.	4'-2"	---
③ WV2	24	#4	STR.	6'-3½" AVG.	4'-6" TO 8'-1"
WV4	2	#4	STR.	2'-0"	---
⑤ ONE 18" DRILLED SHAFT					
EPOXY COATED					
D2	6	#6	STR.	19'-5"	---
NON-EPOXY COATED					
DS2	1	W12	SPIRAL	63'-2"	---

- ① 2 SETS OF 5 BARS.
- ② 2 SETS OF 2 BARS.
- ③ 2 SETS OF 12 BARS.
- ④ 2 SETS OF 4 BARS.
- ⑤ INCLUDED IN PRICE BID PER LINEAR FOOT OF DRILLED SHAFT.

BRIDGE "A" SH-78 OVER CHUCKWA CREEK		BRYAN COUNTY		Design	CJO	6/15
ABUTMENT NO. 2 DETAILS (SHEET 4 OF 4)				Detail	DPG	8/15
				Check	TEE	9/15
				Squad	HENSLEY	
				Engr.	DEFRANCO	
STATE OF OKLAHOMA		DEPARTMENT OF TRANSPORTATION				
JOB/PIECE NO. 27912(04)		SHEET NO. B012				